

PART OF THE NORTH 1/2 OF SEC. 24, T.14N. R.20W. S.22. N.M.  
WINDEMERE ESTATES SUBDIVISION NO. 1

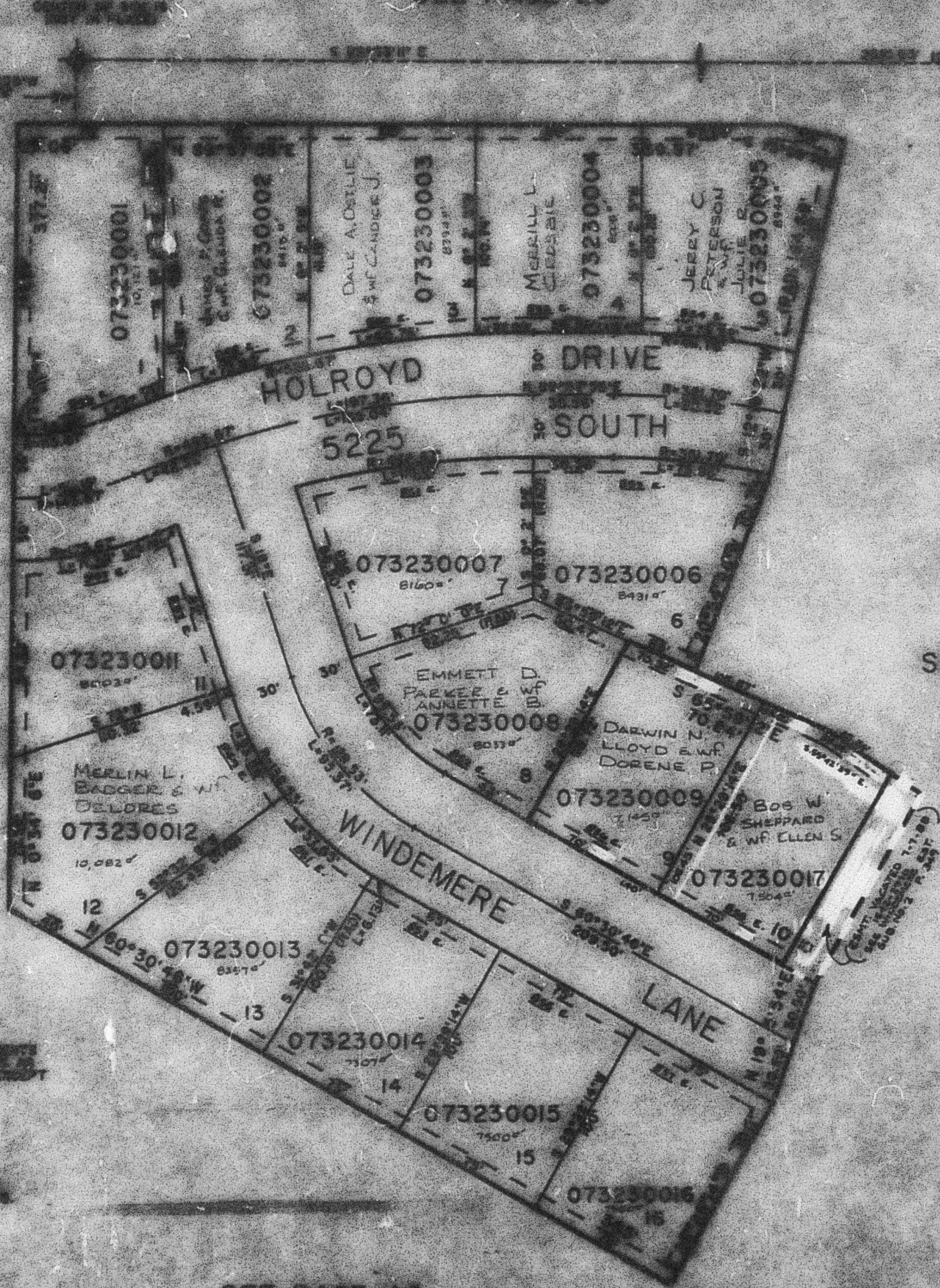
AMENDED LOTS 9, 10 IN SOUTH OGDEN CITY  
REVISION PLAT BOOK 25 PAGE 27

TRIM LINE 27

SCALE 1"=50'

EXCEPT WHERE OTHERWISE SHOWN  
ALL LOTS OWNED BY  
WINDEMERE ASSOCIATES

SEE PAGE 29



SEE PAGE  
46

SEE PAGE  
47

EXCEPT WHERE OTHERWISE SHOWN  
ALL LOTS OWNED BY  
WINDEMERE ASSOCIATES

EXCEPT WHERE OTHERWISE SHOWN  
ALL LOTS OWNED BY  
WINDEMERE ASSOCIATES

SEE PAGE 46